



Prepare • Empower • Inspire

OnCourse Connect uses the Google SSO (Single Sign-On) feature for Students. This allows students to login using their NBPS Google email address and password.


Detailed instructions are below.

1. Start by going to <https://newbrunswick.onscourseconnect.com>

OnCourse Connect :: Login


<https://newbrunswick.onscourseconnect.com>

Go to this address




onscourseconnect

New Brunswick Public Schools



Students

Your district has been setup to use a single sign-on process. Please click the link below to begin.



Guardians

Please fill in your username and password given to you by your district and click the link below to begin.

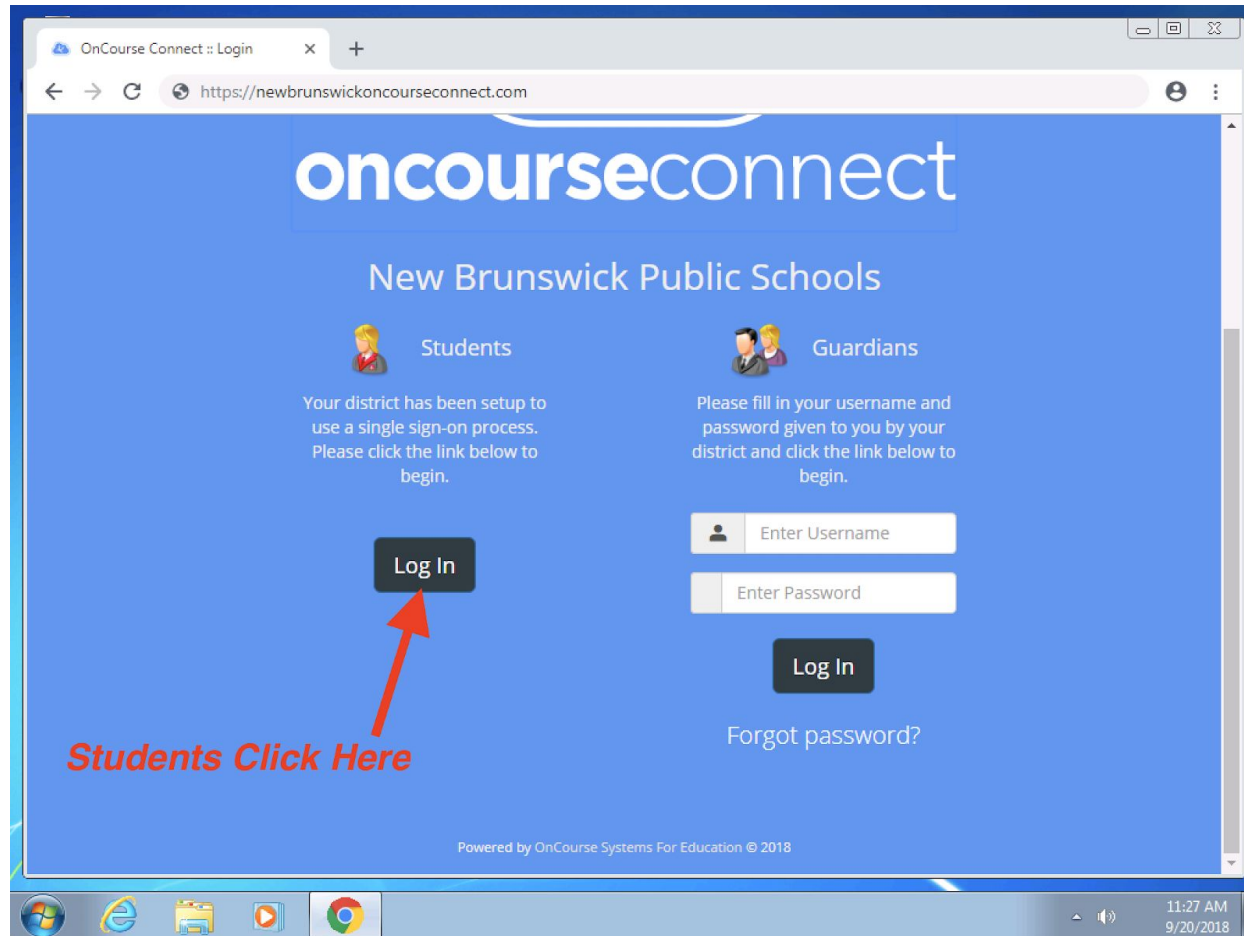
Log In

Enter Username

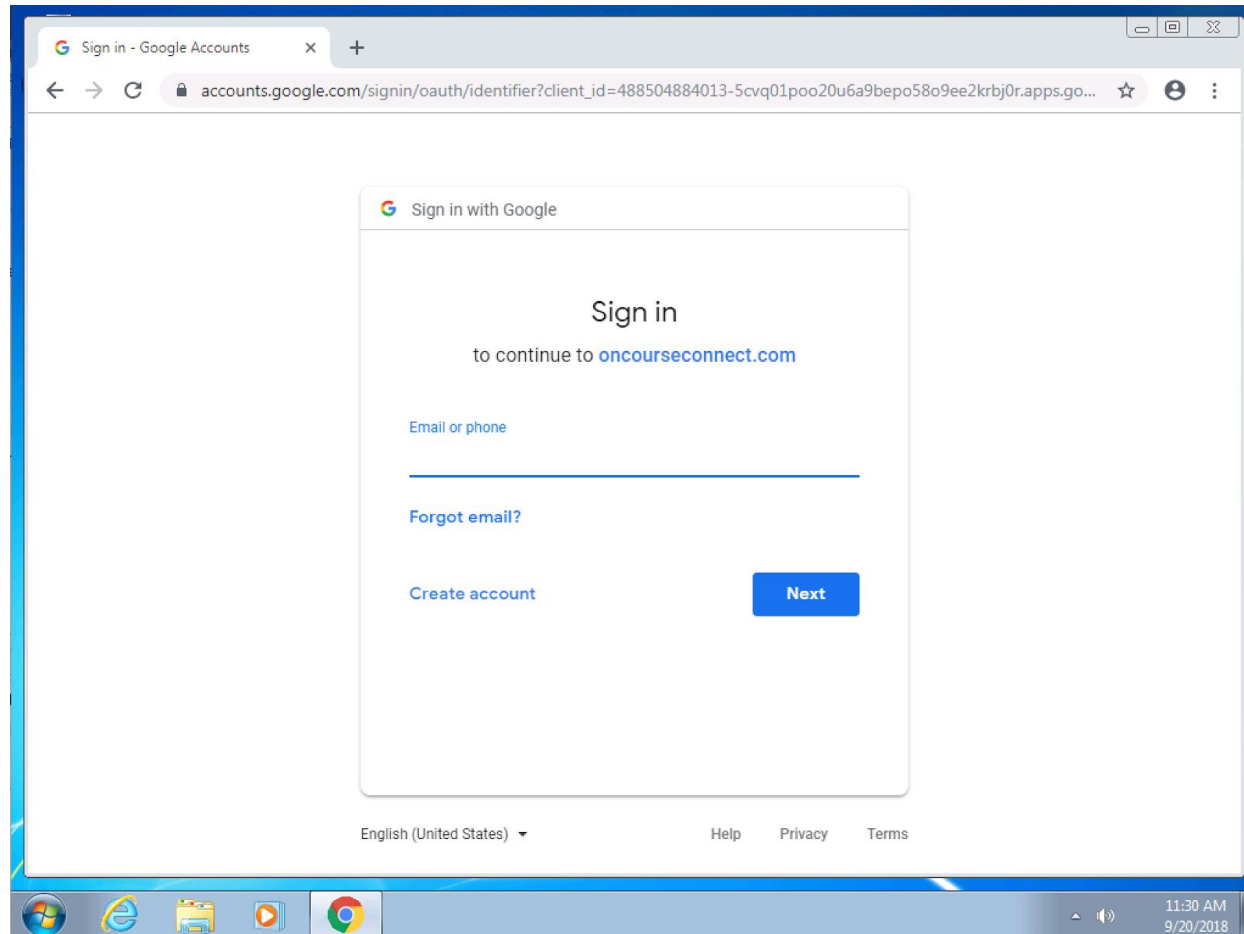
Enter Password

11:26 AM
9/20/2018

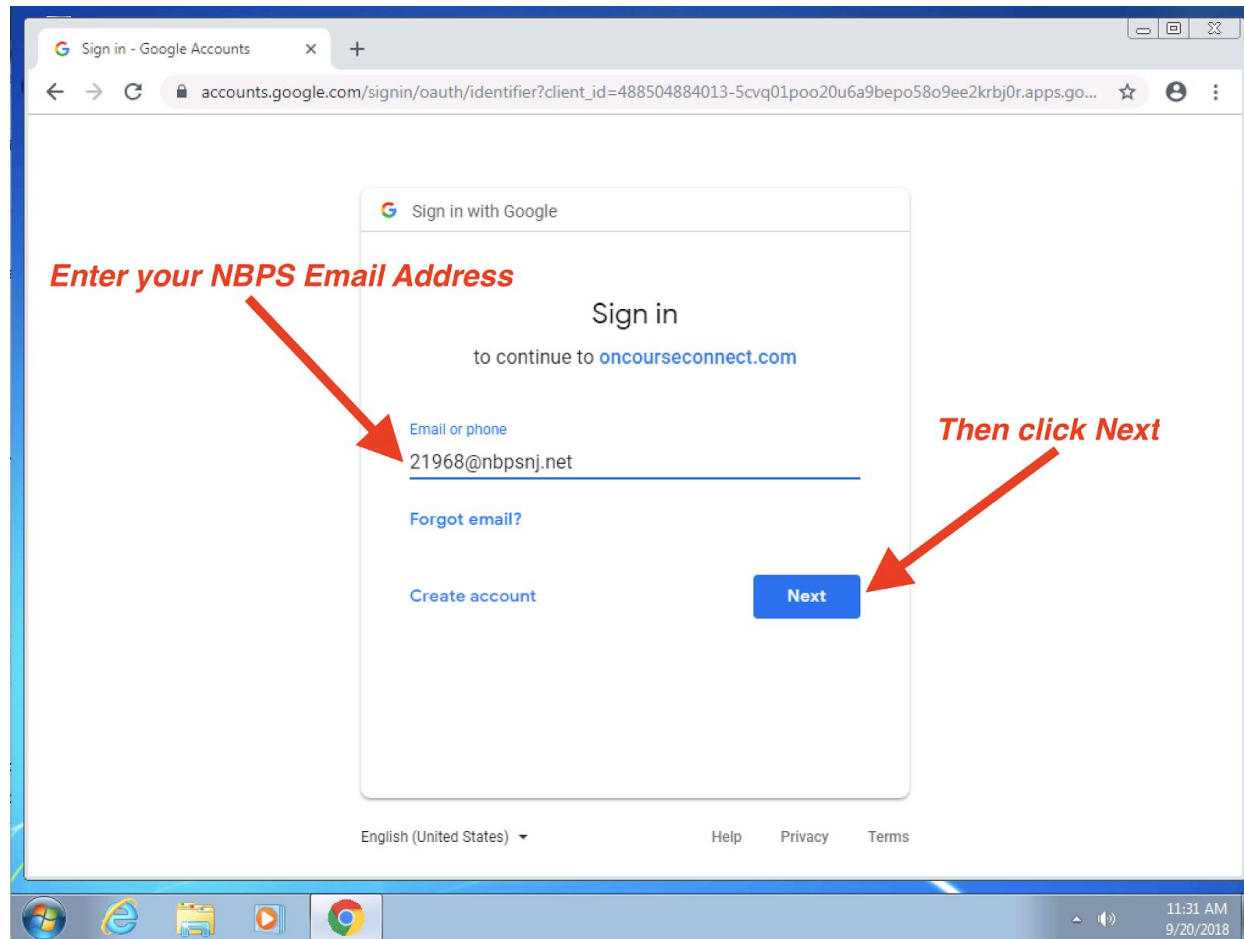
2. Click the Log In button listed under Students,



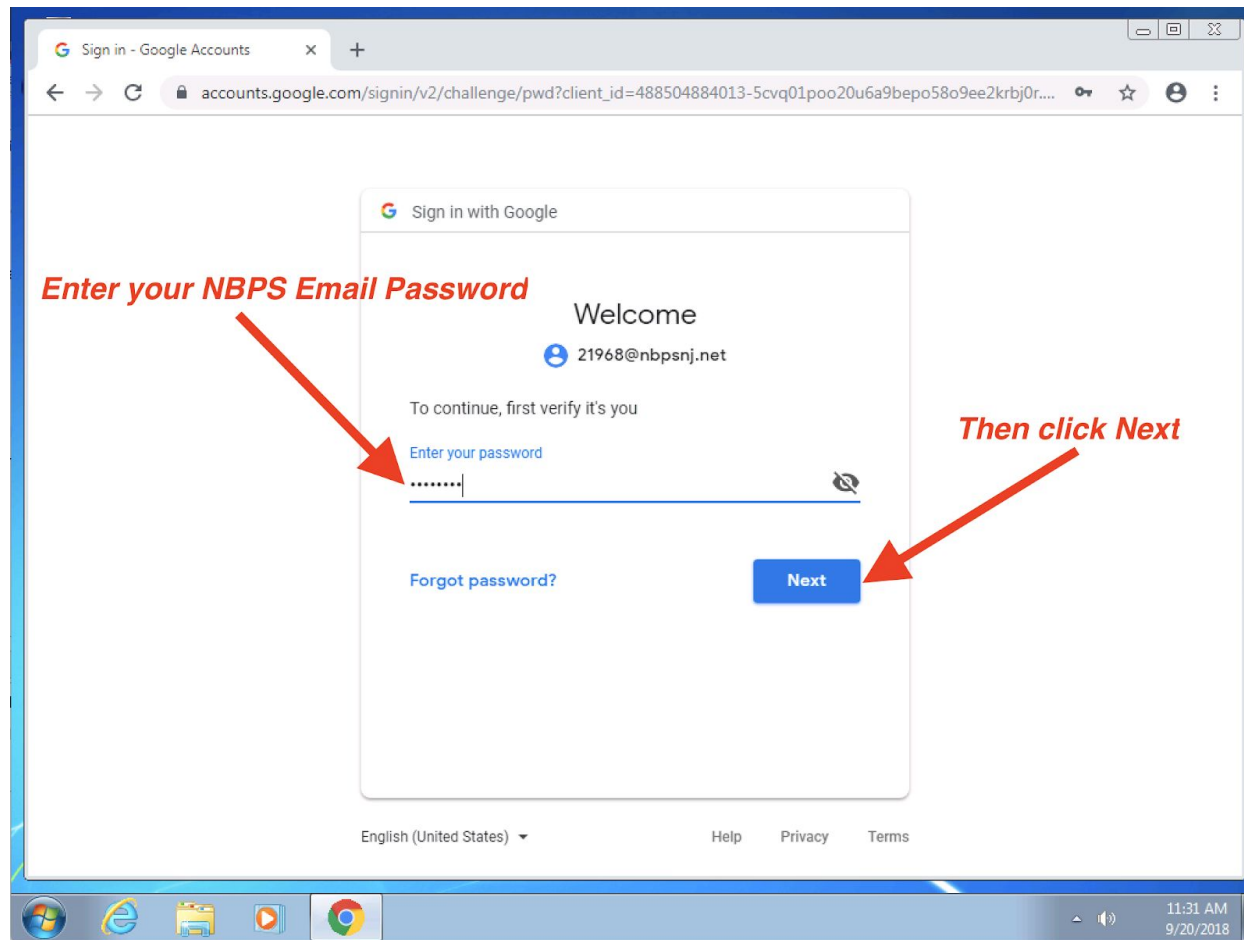
3. The student will be redirected to the Google Sign In page for oncourseconnect.com,



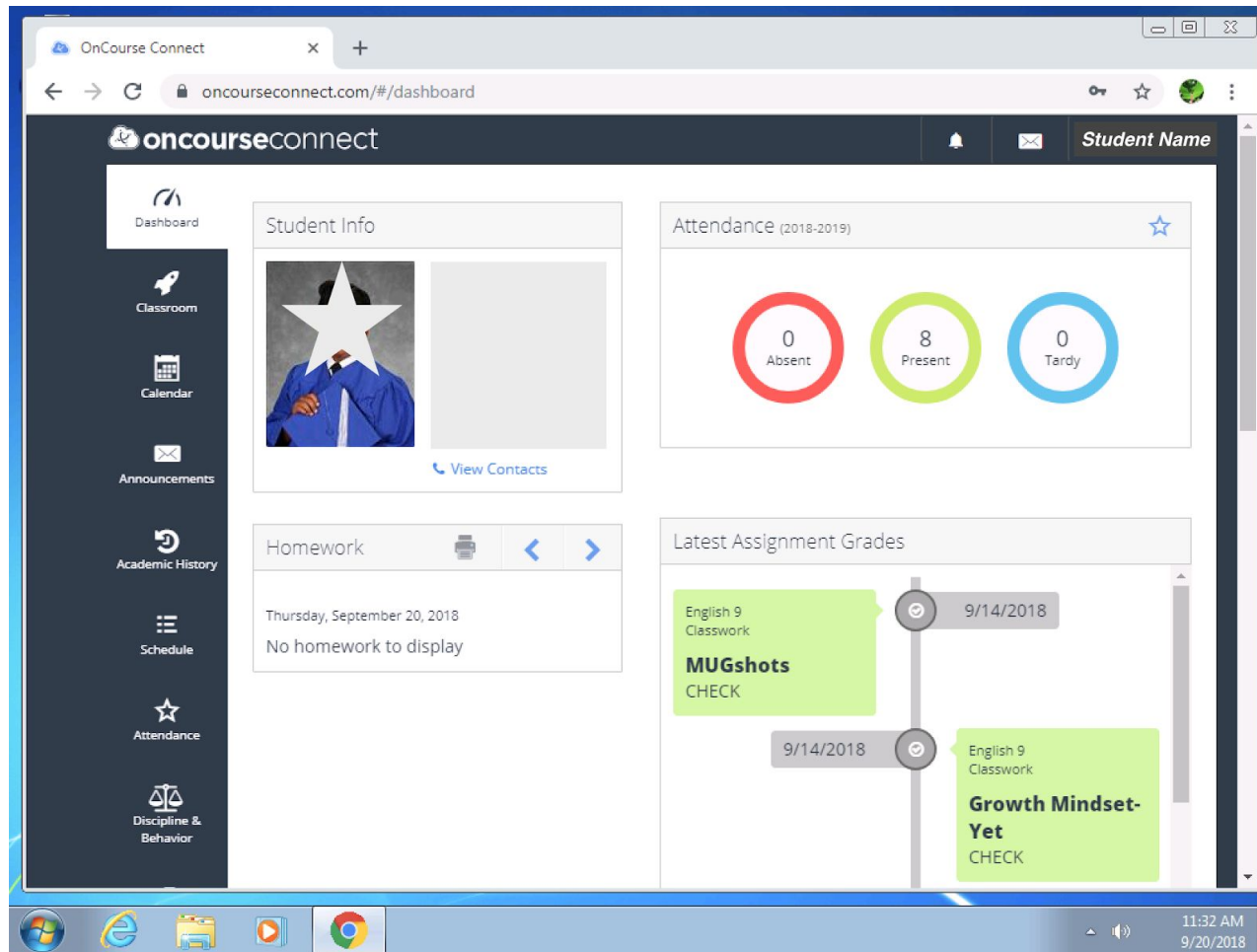
4. The student must enter their NBPS Google Email Address (eg. 21968@nbpsnj.net), then click the Next button,



5. The student must enter their NBPS Google Email Password (eg. NBPS12345), then click the Next button,



6. After a successful login, the student will be directed back into the portal. They can navigate through the features on the left. The features include Dashboard, Classroom, Calendar, Announcements, Academic History, Schedule, Attendance, Discipline & Behavior, and Other Student Data (Bus Information).



7. Don't forget to logout when you are done! Click on your name in the top-right corner and click Logout.

